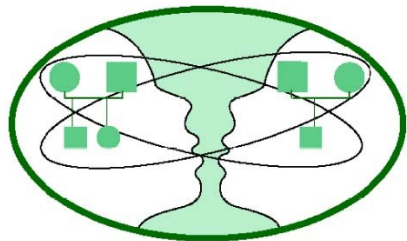




**Barry Litt, LMFT** received his Masters degree in family therapy in Philadelphia where he studied contextual therapy with its founder, Ivan Boszormenyi-Nagy. Barry is an AAMFT Approved Supervisor, and EMDRIA Approved Consultant, and a member and frequent presenter for the International Society for the Study of Trauma and Dissociation. He has authored three chapters in as many books on the integration of EMDR with couples and family therapy, and has presented workshops at 12 annual EMDR conferences and numerous two-day trainings to international audiences. In addition, Barry was a misconduct investigator for the NH Board of Mental Health for a 10-year period. Barry is a licensed Marriage and Family Therapist with a private practice in Concord, NH.



**NHAMFT**  
8 Little John Road  
Durham, NH 03824

«First\_Name» «Last\_Name»  
«Address\_1»  
«Address\_2»  
«City», «State» «Zip»

The New Hampshire Association  
for Marriage and Family Therapy  
Presents a Full Day of Training

## **A Therapist's Guide to Trauma, Dissociation, and Attachment**

*with Barry Litt, LMFT*

**Friday, September 26th, 2014**

at  
the Kimball-Jenkins Estate  
Carriage House  
Concord, NH

**8:30-9:00—Registration and  
Breakfast**

**9:00-12:00—Workshop**

**12:00-1:00—Lunch**

**1:00-4:00—Continuing Workshop**

**6 Continuing Education  
Credits Available**

Space is limited. Register early to help  
ensure your place.

## A Therapist's Guide to Trauma, Dissociation, and Attachment

Workshop Location:

Kimball Jenkins Estate  
Carriage House  
266 North Main Street  
Concord, NH 03301  
[603-225-3932](tel:603-225-3932)

Directions to  
The Kimball-Jenkins Estate  
are available on their website

Go to  
<http://www.kimballjenkins.com/>

and click on

“Directions”  
(at the top of the page in small  
letters)

Enormous advances have been made in recent decades in the understanding of trauma and its sequelae. Moreover, the importance of secure attachment, and the risks associated with insecure attachment further our understanding of resilience or vulnerability to traumatic stress. This workshop will acquaint clinicians with state-of-the-art concepts of trauma, dissociation, and attachment, their presentation in the therapy room, and therapies that have shown the most promise in treating these issues.

### Learning Objectives

1. Participants will be able to describe two general types of psychological trauma.
2. Participants will be able to name three “animal defenses.”
3. Participants will be able to describe three types of structural dissociation.
4. Participants will be able to name the three main types of attachment style in childhood.
5. Participants will be able to name the three main types of attachment style in adults.
6. Participants will be able to describe the phenomenon of *memory reconsolidation* and its significance in psychotherapy.
7. Participants will be able to name three therapeutic approaches that involve memory reconsolidation.

## A Therapist's Guide to Trauma, Dissociation, and Attachment 6 New Hampshire CEUs Available

### REGISTRATION

Rates: (Continental Breakfast and Lunch included in price)	
Non-Member Guests	\$ 149
AAMFT Clinical Fellows and AAMFT Members	\$ 125
AAMFT Pre-Clinical Fellows Associate Members a and Affiliate Members	\$ 79
AAMFT Student	\$ 59

You may register for this workshop by  
mail or online at [www.NHAMFT.org](http://www.NHAMFT.org).  
Enclose this form and payment  
if registering by mail.

10% Discount if Registration is mailed by  
or completed online by **August 1st, 2014**  
Registration Deadline: **September 19th, 2014**

25% Discount available to organizations sending  
five or more attendees. Mail registration to Julie  
Farrell for this organization discount.

Name:

---

Address:

---

---

---

Mail to: Julie Farrell  
NHAMFT  
8 Little John Road  
Durham, NH 03824

If mailing, make check out to NHAMFT.